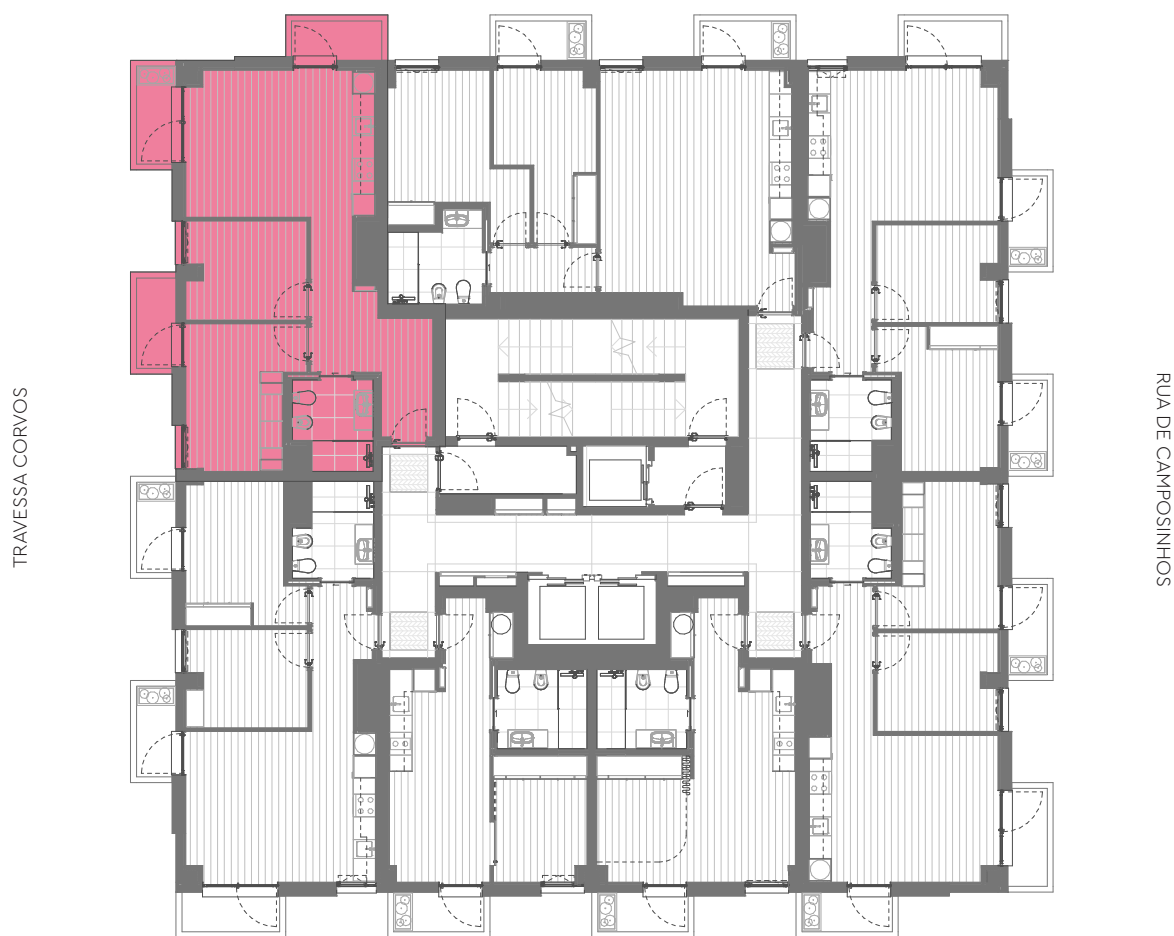


AVENIDA DR ANTÓNIO MACEDO



SUPERMERCADO (Pingo Doce)



Área Bruta Coberta · Covered Floor Area :

3 Varandas · 3 Balconies :

66 m<sup>2</sup> 2 Quartos · 2 Bedrooms

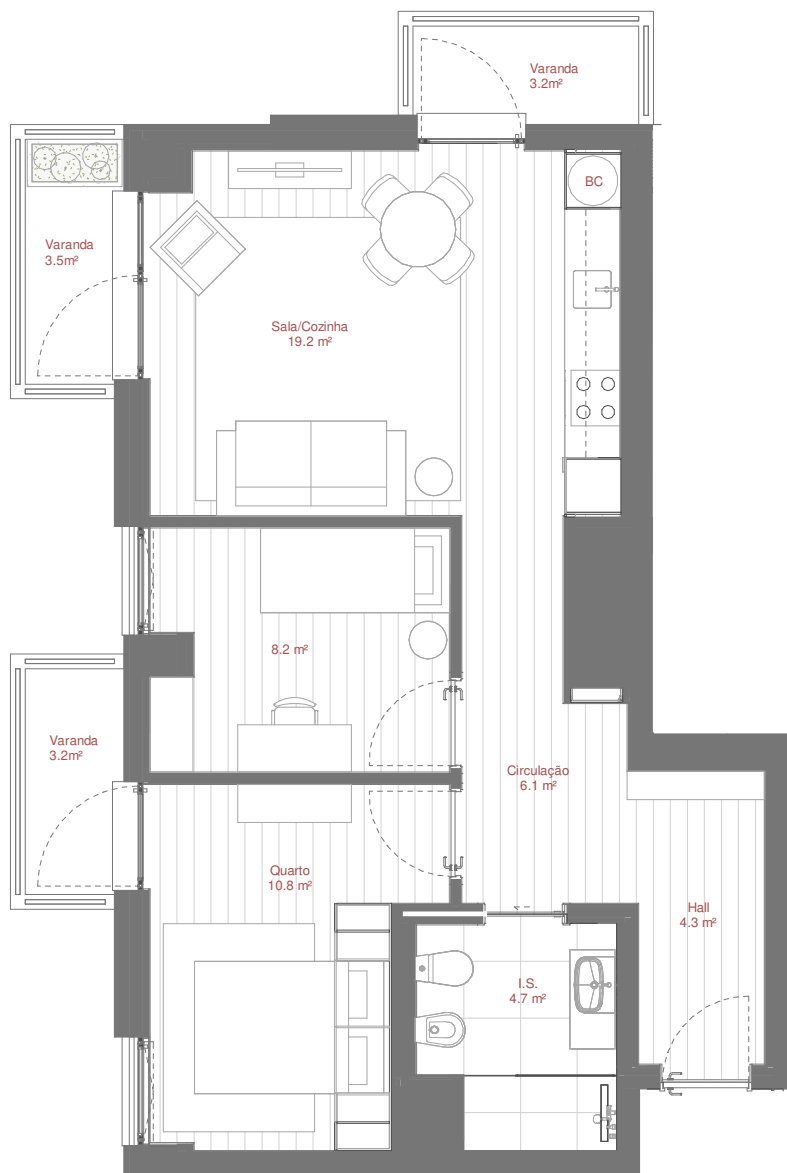
10 m<sup>2</sup> 1 Arrecadação · 1 Storage

1 Estacionamento · 1 Parking Space

Área Total · Total Private Area :

76 m<sup>2</sup>





|   |                   |                                    |
|---|-------------------|------------------------------------|
| Área Bruta Coberta* · Covered Floor Area* : | 66 m <sup>2</sup> | 2 Quartos · 2 Bedrooms             |
| 3 Varandas · 3 Balconies :                  | 10 m <sup>2</sup> | 1 Arrecadação · 1 Storage          |
| Área Total · Total Private Area :           | 76 m <sup>2</sup> | 1 Estacionamento · 1 Parking Space |

\*A Área Bruta Coberta corresponde à superfície total do fogo, medida pelo perímetro exterior das paredes e eixos das paredes separadoras dos fogos, não incluindo terraços e varandas. As áreas indicadas nos compartimentos interiores, são áreas úteis, medidas pelo perímetro interior das paredes e incluem as áreas dos armários.

NOTA Os elementos e informações constantes neste documento são meramente indicativos podendo sofrer alterações.

\*The Covered Floor Area correspond to the total area of the unit, measuring from the outer perimeter of the walls and walls separating the axes of the unit, not including terraces and balconies. The areas indicated in the interior compartments are net internal areas, measured from the inside perimeter of the walls and include the areas of cabinets.

NOTE The information contained in this document is of indicative character, subject to change without notice and does not constitute any form of contract.

